

MODEL: SLV10-AB41

SPECIFICATIONS:

MODEL NUMBER: SLV10-AB41

PUMP DESIGN: Positive Displacement Pump

MOTOR: Permanent Magnet

VOLTAGE: 24VDC Nominal

PRESSURE SWITCH: Factory Set @ 40PSI Shut-Off, Turn on 25 ± 5 PSI

LIQUID TEMPERATURE: 110 Degrees Fahrenheit (43 Degrees Centigrade) Max

PRIME: Self Priming Up to 2.5 Ft. Vertical

PORTS: 3/8" Barb

MATERIAL CONSTRUCTION:

MOTOR HOUSING - Nylon

PLASTICS- Polypropylene

VALVES- Viton

DIAPHRAGM- Santoprene

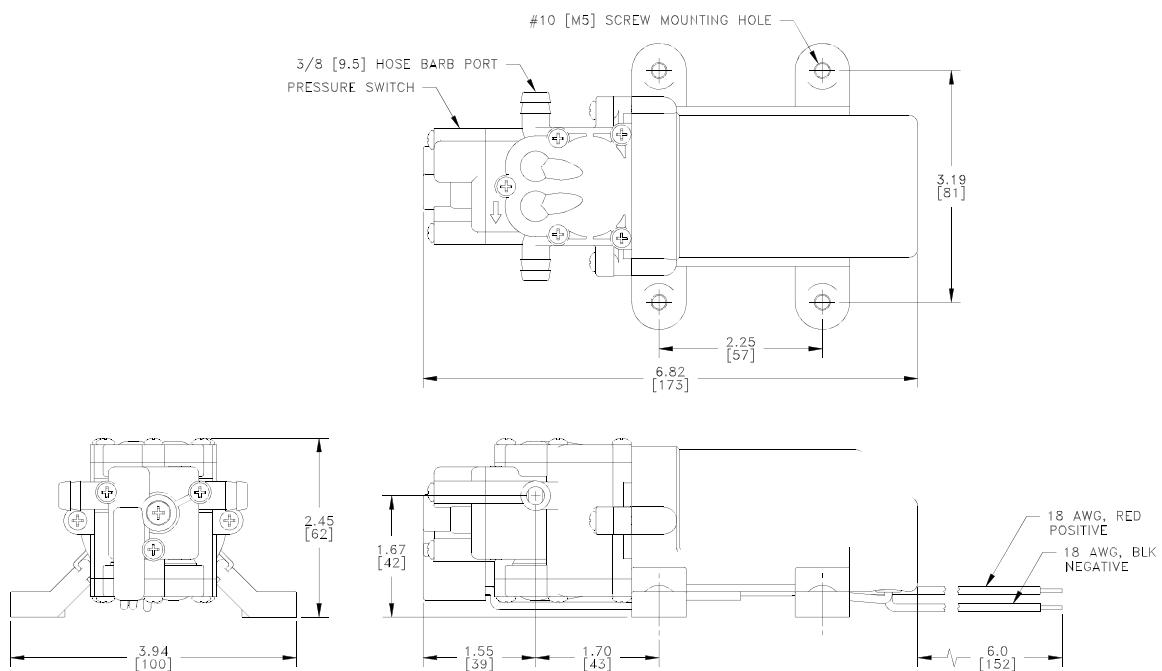
FASTENERS- Zinc Plated/ Stainless Steel

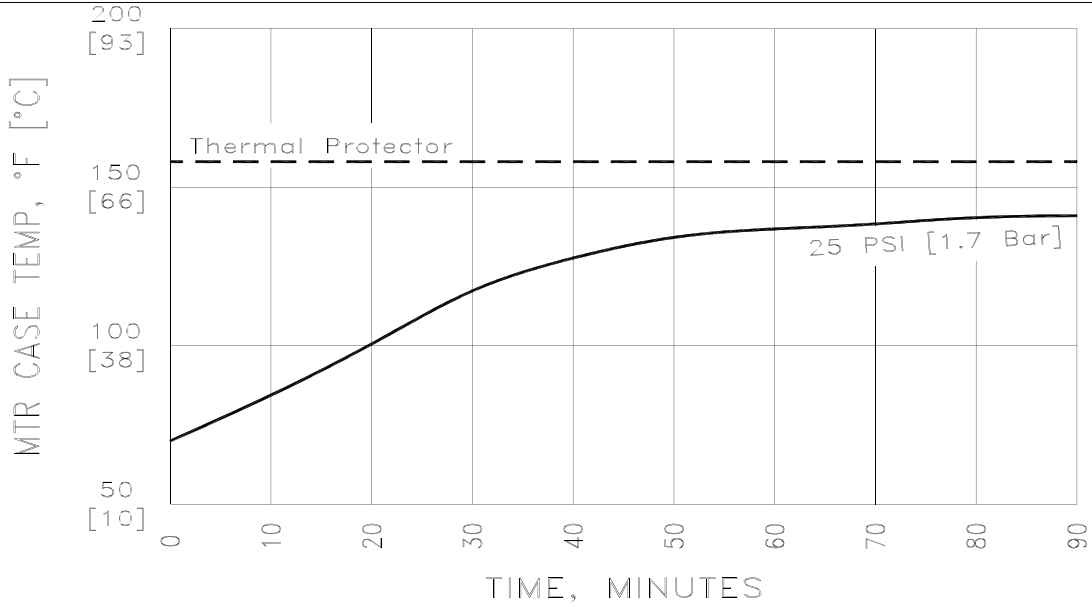
FOR SPOT SPRAYING APPLICATIONS, USE #8 SPRAY TIP OR LARGER!

NET WEIGHT: 1.27 lbs

DUTY CYCLE: Intermittent

DIMENSIONS:



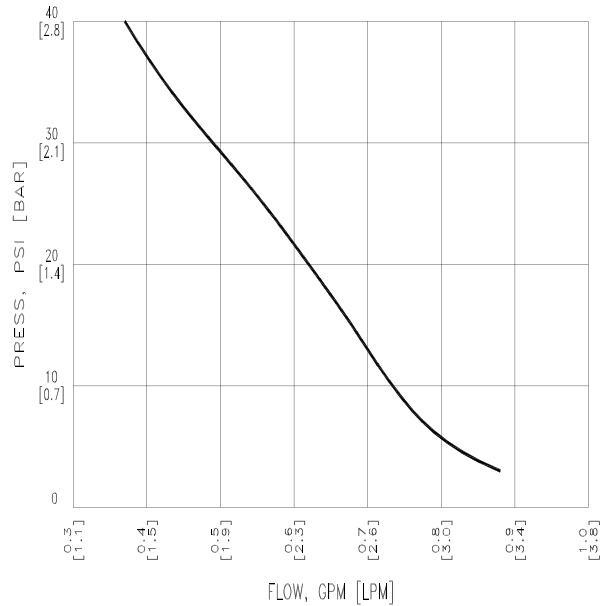


THIS GRAPH IS FOR USE AS A DESIGN GUIDE. IT IS BASED ON RUNNING CONTINUOUSLY WITH AN AMBIENT TEMPERATURE OF 70°F (21°C) IN STILL AIR.

MODEL: SLV10-AB41

TYPICAL PERFORMANCE

PRESSURE (PSI)/BAR	FLOW (GPM/LIT)	RPM MIN/MAX	CURRENT AMPS	VOLTS
3/.2	.9/3.4	3999/4346	0.9	24Volt
10/.7	.73/2.8	3827/4178	1.1	"
20/1.4	.62/2.3	3682/4045	1.15	"
30/2.1	.49/1.9	3609/3980	1.20	"
40/2.8	.37/1.4	3599/4034	1.25	"



FLOW-GALLONS PER MINUTE (LITERS PER MINUTE)

**-SPECIFICATIONS SUBJECT TO CHANGE WITHOUT NOTICE
-ALL DATA BASED ON TESTING WITH WATER AT AMBIENT TEMPERATURE**

5900 KATELLA AVENUE, CYPRESS CA. 90630 (562) 795-5200 (800) 854-3218 FAX (562) 795-7554
 SHURflo EAST, 52748 PARK SIX COURT, ELKHART, IN 46514 (219) 262-0478/(800) 762-8094/FAX 219-264-2169
 EUROPEAN DIVISION, UNIT 5, STERLING PARK, GATWICK ROAD, CRAWLEY, WEST SUSSEX RH10 2QT
 011-44-1293-424-050 FAX 011-44-129-421-880